



Happy New Year!

We have now moved out to the Portacabin at Bruckland, we haven't quite got the phones switched over but please come along or email us if you need us.

**Enclosed with this newsletter you'll find
the January shop voucher**



If you'd like to receive the newsletter through email or if you would prefer to receive it in the post, please get in touch and we can arrange that for you.

Email: ncdcoffice@northmavine.com or phone 01806 544222, or just nip into the office if you are passing by.

NCDC Projects

Old Urafirth School

NCDC is continuing to pursue purchasing the Old Urafirth School. We received funding from the Scottish Land Fund in 2023 which allowed us to do an up to date housing assessment for the whole of Northmavine as well as architectural feasibility drawings showing options for the site. We placed an Expression of Interest with the Rural Highland & Islands Fund in 2024 which was unfortunately rejected.

We're still gathering names for our expression of interest in housing in Northmavine. We need to have proof of interest to show the appropriate bodies to give a realistic idea of need within Northmavine.

It's not too late to let us know if you are interested in rental properties here in Northmavine. Please email us ncdcoffice@northmavine.com



Eshaness Lighthouse

The NCDC Board of Directors met with Hazel Sutherland & Mairi McLeman of Shetland Amenity Trust at the Eshaness Lighthouse on a windy night in November to discuss the future of the building. We are looking a few different options at the moment including a pop up craft shop, exhibition space or workshop space.

The area around the lighthouse is certainly well visited by tourists and locals here in Shetland.

In the past the property was rented out by the Amenity Trust as a short term let along with a few of the other lighthouse's in Shetland.

Rural Energy Hub - Community Transport

If you have been at Bruckland recently, you will have seen the new van we have purchased. This is part of the Rural Energy Hub community transport project. We have included a short survey with your newsletter to find out what your views are for community transport in Northmavine and how you would like access to the new van. Please return completed forms to us at Bruckland or email a copy. You can also fill in the survey online here <https://forms.office.com/e/9HUZhUmccW>





Things are starting to move at a good pace now, as you can see the raised beds are under construction.

We will have :

1 x 4.8m x 1.6m

2 x 4.8 x .90m

1 x 3.0m x 1.6m

2 x 3m x .90m

We have 9 tonne bags of topsoil ready to start filling them. Once filled we just need the temperature to rise and the days to get longer and we can start planting. In fact, our first seeds will go in shortly.

The big rig at Hamnavoe approx 35m x 18m is fully trimmed and we have started to clear some weeds. There are 2 plots at Da Barn Hillswick which are fully weeded, dug and already have some onions and garlic over wintering.

Big Hannah our industrial food waste composter is fully checked and tested and we'll be starting her up once the temperature picks up.

If anyone fancies testing their green fingers and helping with any of the above then please get in touch.

Northmavine Broadband

We are currently looking in to the broadband speed here in Northmavine. NCDC are keen to start a project based on improving the service, and are in talks with Shetland Broadband & Shetland Telecom on how best to do it.



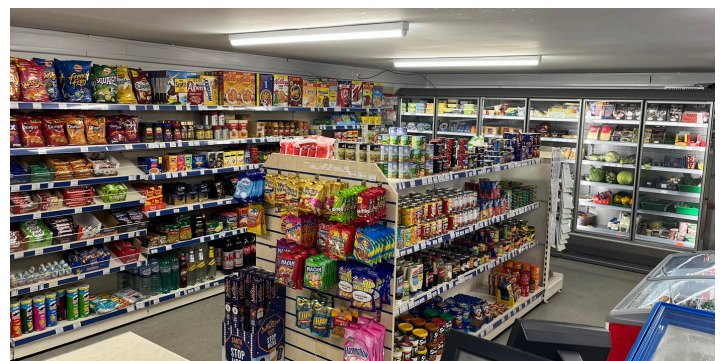
Bruckland continues to be busy, we had loads of donations before we closed for Christmas, however the windy winter weather delayed us in opening in the new year.

We're always on the lookout for more volunteers, we're offering free membership for those who are interested helping out, please get in touch with Charlotte or Karlyn if you would like more information.



Hillswick Shop

The Hillswick Shop were successful with two funding applications before Christmas which has been used to put in a new multi deck chiller unit and lights. Anyone who has been along we are sure will agree what a difference it has made! The shop would like to thank the Shetland Community Benefit Fund and the Shetland Rural Retail Services Scheme for supporting the project.



Kale Yard Beanie

Local knitwear designer Mandy Moore's Shetland Kale Yard Beanie is now available on Ravelry, the proceeds of both the pattern and the kits sold go towards our Growing Local projects.

Johnnie Notions

NCDC hopes to have the Johnnie Notions Böd up and running ready for this years tourist season. Keep an eye out on our website for when it is ready.



Crofting for the Future - In Person Training

There will be an in person 2 day training event held in the Ollaberry Hall on the 7th & 8th of March for both new and experienced crofters. The training will cover topics such as sustainability, preparing for changes in agricultural policy, adapting crofting practice and more.

Tickets for the event can be found [here](#) or you can go to the Scottish Crofting Federation Website, click on Training, and scroll down for the Ollaberry date.

Community Pop Ins

The North Roe Community Pop Ins in the North Roe & Lochend Hall are back again this season. They are proving to be a welcome event in folks social calendar to meet up with friends and have a yarn. Community Development worker for the north ward - Lynsey Hall makes some bacon rolls, a cup of tea or coffee. She also takes along old photos as well as games, or you can bring your own craft whether it's knitting or crochet. The Community Pop In is also happening in the Brae Community Hall every second Friday starting on the 10th January.



The Living Well Hub, Brae

The Living Well Hub, has moved over to the **Clubroom of the Brae Hall**, while refurbishment works take place at the Youth and Community Centre for the Rural Energy Hub.

2025 Resolutions

New year resolutions can be a bit daunting. If it's craft work you like there are plenty of craft nights on throughout Northmavine. Or if it's building up on your fitness you could start a walking challenge such as Land's End to John O' Groats, or start smaller with a walk from Skaw to Sumburgh.

The Shetland Islands Council are running their *Jump Start January* challenge doing 15 minutes of exercise every day for 4 weeks, or for as many days as you can manage.

You can find more information on the Jump Start January Challenge go to

www.shetland.gov.uk/jumpstartjanuary

Cycling UK are offering a wide range of free support to help get you cycling and walking more often.

- You can borrow an e-bike and cycle accessories from them at no cost for up to a month.
- Book a free cycle skills session, available for individuals of all ages, families and organisations.
- Join a health walk or lead ride
- Learn some basic bike maintenance

Contact Andrew on 07825 983 464 or

andrew.campbell@cyclinguk.org to find out more

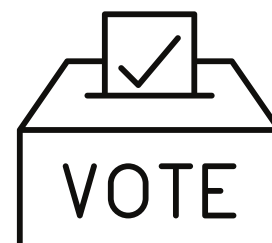
Community Council Scheme Review

The Phase 3 Consultation for the Community Council Scheme Review is now open for comments until 5pm on Friday 31st January 2025. You can find all the relevant documents and fill in the consultation by heading to <https://www.shetland.gov.uk/ccschemereview>.

There will also be paper copies available in the Ollaberry and Hillswick Shops.

Election Reminder

The election date for a new member of the Shetland North Ward is the **23rd of January**, the North Roe & Lochend Hall and Hillswick Hall will be open from 7am - 10 pm.





December Weather Report 2024 by Joy French, Ollaberry



We arrived at December 2024, and to confirm it is winter we began the month with 2 days of **snow flurries**, and ended the month with 2 days of **snow falling and lying** to take us into the New Year!

Sunshine - or lack of it. December will be remembered as a very dark, overcast month, with **20 sunless days**, and another 7 days when sunshine was significantly less than 1 hour.

The **TOTAL of 5.5 hours** of recorded sunshine was well below the December average total of 24 bright sunshine hours.

Rainfall December usually has in the region of 175mm rainfall, which is enough! But this December had 194mm, almost 7inches.

Gales Many days included high winds, but 4 days were true gale days with spells over 39mph/Force 8, and we could say, "hours" over that speed! Maximum gusts on 3 days were over 50mph viz. 59mph on 4th, 57mph on 5th, and 52mph on 19th - Force 9 and 10 (but not as high as expected).

Fog Then there were those awful **6 fog days**, registered as official at 9am, plus **2 more days** after 9am, all with drushie, drizzly weather, and very poor visibility, probably the hardest to bear of all weathers.

Temperature Even with such a mix of weathers December's Mean temperature of 5.8 deg **Celsius** worked out to be **+1.3deg C from the average**, with both maximum and minimum temperatures well above zero, until the last few days when they dropped to very low, and on 30th/31st they **were sub-zero**, and grass level temperature dropped to -5.7deg C in the snow, as we face the New Year!

Annual Weather Report for 2024 by Joy French, Ollaberry

I have been looking back from the year 2024 just ended, to the year 2010, to see what differences stand out if any.

Gale days.

The number of gale days has definitely increased this year. We have had 35 gale days, whereas the previous years have mostly been in single figures.

Fog days.

Fog at 9am, often with drizzle, has been on 24 days, when usually below 10 days, and just into the teens of days, has been recorded up till now.

Sunshine hours.

2024 tops the whole set of years with 89 days sunless, and for the last 4 years, the number of sunshine hours has been below the 30 year average. Just look at the sunshine hours for December: 5.5 hours in TOTAL and 20 days sunless!

Snow falling, snow lying.

Snow falling this past year fell on 30 days, and on 22 days snow was lying. Compare with 2015 when there were 63 days snow falling and only 14days snow lying.

Ground frosts.

At 90 days of ground frost in 2024 I thought I had found the most, until I discovered that in 2017there were 95 days of frost!

Temperature.

Out of all this weather mix the MEAN temperature at 8.5deg. C. for 2024 has measured +0.5deg C difference from the 30 year average.

At least Shetland weather is never boring, and rarely stays the same during any given day!



What's On

Thursday 9th January

North Roe Pop Ins 10:30am-12:30pm
North Roe & Lochend Hall

Saturday 11th January

Bairns Disco/ Family Social Night 7pm
North Roe & Lochend Hall

Monday 13th January

Hap Night 7-9.30pm
Ollaberry Hall

Tuesday 14th January

Makkin & Yarnin 7:30pm
North Roe Methodist Kirk

Wednesday 15th January

500 - 7:30pm
Hillswick Hall

Thursday 16th January

Tea, Coffee & Company 10:30am-12:30pm
Ollaberry Church

Friday 17th January

Health Walk followed by Lunch Club 11.20am - 2pm
Ollaberry Hall

Saturday 18th January

Sandison's Spaegie Tonic Darts Tournament - 7pm
Hillswick Hall

Monday 20th January

Makking & Craft Night 7-9pm
Hillswick Hall

Thursday 23rd January

North Mainland Council Election 7am - 10pm
North Roe & Lochend Hall

Sunday 26th January

Winter Lunch 1 -4 pm
Sullom & Gunnister Hall

Thursday 30th January

Tea, Coffee & Company 10:30am-12:30pm
Ollaberry Church

Thursday 6th February

North Roe Pop Ins 10:30am-12:30pm
North Roe & Lochend Hall

Thursday 13th February

Tea, Coffee & Company 10:30am-12:30pm
Ollaberry Church

Friday 14th February

Health Walk followed by Lunch Club 11.20am - 2pm
Ollaberry Hall

Thursday 20th February

North Roe Pop Ins 10:30am-12:30pm
North Roe & Lochend Hall

Friday 21st February

Northmavine Up Helly Aa - a list of events will be soon

Wednesday 26th February

Spinning Group 7-9pm
Ollaberry Hall

Thursday 27th February

Tea, Coffee & Company 10:30am-12:30pm
Ollaberry Church

Every Monday

Bruckland open 2pm -5pm
Ability Shetland Youth Club 6-7:30pm **Term time**
North Roe & Lochend Hall

Every Tuesday

Bruckland open 2-5pm
Northmavine Fiddle and Accordion Club Hillswick Hall
7.30pm start
Makkin & Yarnin, North Roe Methodist Kirk, 7:30pm,
(fortnightly)

Every Thursday

Sullom Mak & Yak, Sullom & Gunnister Hall 7-9:30pm

Every Friday

The Living Well Hub Brae Youth Centre 10am-4pm
Ollaberry Youth Club 6-8pm **Term time Oct Holidays -**
Easter Holidays
Ollaberry Hall

Every Sunday

Bruckland open 2-5pm

