



If you'd like to receive the newsletter through email or if you would prefer to receive it in the post, please get in touch and we can arrange that for you.

Email: [ncdcoffice@northmavine.com](mailto:ncdcoffice@northmavine.com) or phone our mobile on 07951515375, or just nip into the office if you are passing by.

### Job Vacancy

We are looking for a financial admin assistant to join our team. This is a full time post but part time will be considered.

If you are interested in finding out more information please email [ncdcoffice@northmavine.com](mailto:ncdcoffice@northmavine.com)



A polite reminder that Bruckland is only open Sundays, Mondays & Tuesdays from 2-5pm, this includes dropping off donations.

We are currently overwhelmed with both furniture and books - so please pop along and have a browse!



Here at Growing local things are moving fast, as you can see there are plenty of mainly salad crops growing in the tunnel, we still have the larger plants to go in - tomatoes, cucumber, courgettes and beans. For the 30th year in a row I have planted too many tomatoes, cucumbers, courgettes etc etc. Due to this we will be having a plant swap / give away in early June so keep an eye on Facebook for more details.

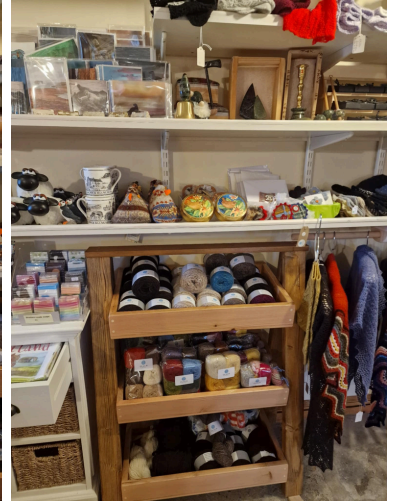
We have been given some Shetland Black tatties from Da Barn and have planted 6 rows, hopefully we will have a bumper crop. Planting has started up at Da Fouds rig up at Hamnavoe on land kindly provided by Nancy Johnson. This will be planted with sprouts, brassicas, leeks, carrots etc, these will hopefully be available to buy in Hillswick and Ollaberry shops later in the year.

We hope your growing season is off to a flyer as well.



## Exhibitions

The Tangwick Haa Museum is now open for the 2025 visitor season! Recent renovations to the shop include an extension and the addition of new shelves, providing more space than ever for showcasing local crafts. This year's exhibitions feature \**"Events in Northmavine,"*\* which includes a display on the Northmavine Up Helly Aa, as well as \**"Northmavine Archaeology."*\* The museum will be open daily from 11 a.m. to 5 p.m. until the 30<sup>th</sup> of September, so be sure to stop by and explore!



### **Esmé Wilcock Silversmith and Kelly Robertson Art Summer at the St Magnus Bay Hotel**

This summer, Kelly and Esmé will be showcased at the St Magnus Bay Hotel, located in the charming Drawing Room upstairs. Here, you can relax, engage in conversation, and enjoy the stunning historical setting and beautiful views. They have thoughtfully aligned their opening hours with the Bistro, where you can indulge in St Magnus Bay lunches, delightful homebakes, coffee, tea, or perhaps a glass of wine or Shetland beer. Though the exhibition is upstairs, anyone with mobility issues can request items to be brought down for them to look at.



The exhibition opens on the 6<sup>th</sup> June at 6:30pm, and runs from Saturday 7<sup>th</sup> June to Sunday 27<sup>th</sup> July  
Daily Opening Hours 11:00 a.m. to 3:00 p.m,  
*along with regular evening openings*





**April Weather 2025 by Joy French, Ollaberry**  
***Whether the Weather be cold, or whether the Weather be hot,***  
***We'll whether the Weather, whatever the Weather, Whether we like it or NOT!***



What a treat April has been after the cold dark days of the winter months!

The first 9 days were totally dry, with strong sunshine hours reaching 62.2 hours during that time, and temperatures between 10 and 15deg.C. Even the wind was mostly light.

During the middle part of the month, 10<sup>th</sup> –21<sup>st</sup> temperatures kept to the same pattern, but some rain fell, amounting to 20.8mm (25mm= 1inch). In that period the wind force was a little higher so it felt cooler than the temperature suggested, especially in the shade.

The month's average wind speed was 8mph, with the highest gust only 36mph on the 14<sup>th</sup>. Hence NO GALES!

During the last 9 days the final total rainfall reached 47.6mm (60% of April average) which was just below 2 inches. The April average is 3 inches. In this period we also find the 2 days which give us the most daily rainfall of the month ie. 10.2mm on 22<sup>nd</sup> and 10.4mm on 27<sup>th</sup>.

Here we also find the highest daily temperature of the month, and of the year so far, which was 17.1deg C. on 30<sup>th</sup>. The lowest was 3.1deg C. on 24<sup>th</sup> and the lowest grass temperature -0.4deg.C on 4<sup>th</sup>, the only real frost. A few other days came near to zero.

The mean temperature overall was 8.4deg. C. This was the difference of + 2.0 deg. C. above the 30 year average. Do not shout too loud! May's forecast begins with Northeasterly winds ..... Sorry .....

### Tea Time Tuesdays

Tea Time Tuesdays are back this term and in the Ollaberry Hall, the next 2 dates are the 27<sup>th</sup> May & the 17<sup>th</sup> June, from 3 - 5pm.

### End of Lambing Dance

The End of Lambing Dance is back again this year on the 31<sup>st</sup> May in the Ollaberry Hall, with music from the popular young band Filskit.

**TEATIME TUESDAYS**  
Ollaberry Primary  
**MAY 6TH  
MAY 27TH  
JUNE 17TH**  
**3:00 - 5:00pm**  
**FOOD, CRAFT, CUPPAS  
& SOMETHING SPORTY**  
for more info please contact Lynsey on 0172614506  
ALL FOOD & ACTIVITIES ARE FREE  
CHILDREN MUST BE ACCOMPANIED BY AN ADULT  
EVERYONE IN THE COMMUNITY WELCOME!  
CLD

**TUESDAY 6<sup>TH</sup> MAY -**  
**BOCCIA**  
**MAKING SAUSAGE KEBABS**  
**MARBLING ART**

**TUESDAY 27<sup>TH</sup> MAY -**  
**ARCHERY**  
**MAKE YOUR OWN PIZZA**  
**AIR DRY CLAY MODELLING**

**TUESDAY 17<sup>TH</sup> JUNE -**  
**GOLF**  
**MAKING CHICKEN WRAPS**  
**LINO PRINTING**

**END OF LAMMING DANCE**  
Ollaberry Hall  
Dance to Filskit  
31st May 2025  
8pm - 1am  
£10 OVER 16'S  
£5 UNDER 16'S  
PRIMARY SCHOOL FREE  
UNDER 16'S MUST BE ACCOMPANIED BY AN ADULT  
Supper Provided, Bar Available.



## ***What's On***

### **Thursday 22<sup>nd</sup> May**

Mak & Yak

*Sullom & Gunnister Hall*

### **Saturday 24<sup>th</sup> May**

Meleri Mair Art, Bairns session am, adult session pm

*Sullom & Gunnister Hall*

### **Tuesday 27<sup>th</sup> May**

Tea Time Tuesdays - 3-5pm

*Ollaberry Primary School*

### **Wednesday 28<sup>th</sup> May**

Spinning Group 7-9pm

*Ollaberry Hall*

### **Thursday 5<sup>th</sup> June**

Lunch Club 12-2pm

*North Roe Hall*

### **Friday 6<sup>th</sup> June**

Esmé Wilcock Silversmith and Kelly Robertson Art

Summer Exhibition Opening 6:30pm

*St Magnus Bay Hotel*

### **Tuesday 17<sup>th</sup> June**

Tea Time Tuesdays - 3-5pm

*Ollaberry Primary School*

### **Thursday 3<sup>rd</sup> July**

Lunch Club 12-2pm

*Ollaberry Hall*

### **Sunday 6<sup>th</sup> July**

Sunday Teas in Aid of Church Funds 2-5pm

*Ollaberry Hall*

### **Thursday 7<sup>th</sup> August**

Lunch Club 12-2pm

*North Roe Hall*

### **Thursday 4<sup>th</sup> September**

Lunch Club 12-2pm

*Ollaberry Hall*

### **Thursday 2<sup>nd</sup> October**

Lunch Club 12-2pm

*North Roe Hall*

### **Thursday 6<sup>th</sup> November**

Lunch Club 12-2pm

*Ollaberry Hall*

### **Thursday 4<sup>th</sup> December**

Lunch Club 12-2pm

*North Roe Hall*

### **Everyday**

Tangwick Haa Museum

11am - 5pm

Esmé Wilcock Silversmith and Kelly Robertson Art

Summer at the St Magnus Bay Hotel 11am-3pm

*From 7<sup>th</sup> June -27<sup>th</sup> July*

*St Magnus Bay Hotel*

### **Every Monday**

Bruckland open 2pm -5pm

Ability Shetland Youth Club 6-7:30pm **Term time**

*North Roe & Lochend Hall*

Makkin & Craft Night 7-9pm (fortnightly from the 6th Jan)

*Hillswick Hall*

### **Every Tuesday**

Bruckland open 2-5pm

Northmavine Fiddle and Accordion Club Hillswick Hall

7.30pm start

Makkin & Yarnin, North Roe Methodist Kirk, 7:30pm,  
(fortnightly from the 14th January )

### **Every Friday**

The Living Well Hub Brae Hall 10am-4pm

Ollaberry Youth Club 6-8pm **Term time Oct Holidays -**

**Easter Holidays**

*Ollaberry Hall*

### **Every Sunday**

Bruckland open 2-5pm

Carvery - St Magnus Bay Hotel, phone 01806 503372

